

SUMINO-专注挤出薄膜制造系统

Focus on extrusion film equipment manufacturing system

流延机 | 淋膜机 | 片材机 | 涂布机 | 复合机 | 拉伸机

Cast film equipment | Laminating machine | Sheet machine | Coating machine | Compound machine | Stretching machine

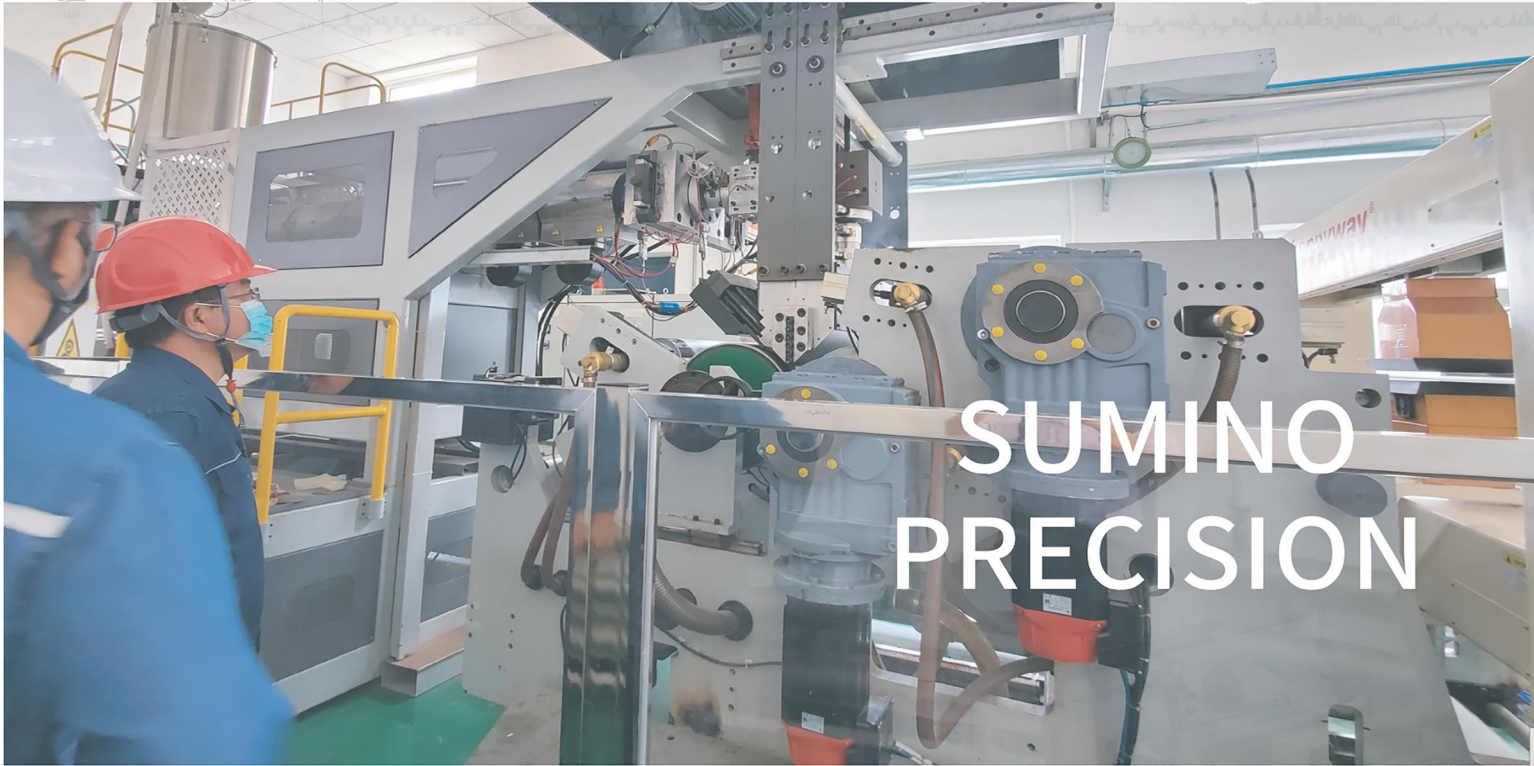
逆向工程 MDO-TDO薄膜制造系统

SUMINO
PRECISION



南京住野精工机械有限公司

Nanjing Sumino Precision Machinery Co., Ltd.



南京住野精工机械有限公司

Nanjing Sumino Precision Machinery Co., Ltd.

南京住野精工机械有限公司是一家集科研、生产、销售于一体的高科技企业，公司座落于美丽的东部城市——南京市，毗邻机场、高铁站及汽车总站，交通方便。目前已有厂房8000多平方米，在职员工80多人，其中中高职称工程师20人。

Nanjing Sumino Precision Machinery Co., Ltd. is a high-tech enterprise integrating scientific research, production and sales. The company is located in the beautiful eastern city-Nanjing, adjacent to the airport, high-speed railway station and bus terminal, with convenient transportation. At present, there are more than 8,000 square meters of workshops and more than 80 employees, including 20 engineers with medium and high titles.



+86-025-51839686 / 133 9078 0291



liliming@susumino.com



www.susumino.com



江苏省南京市江宁区开拓路11号

多层挤压淋膜生产线

Extrusion film lamination production line

该系列组包含多类不同领域的淋膜复合机，可以实现无纺布、纸张、薄膜、软片、浸浆布、合成材料等材料的单、双面淋膜及双层、三层材料的淋膜复合。广泛应用于食品、包装、广告、居家用品、护理、医卫及建筑材料等领域的产品生产。

This series includes multiple types of laminating machines in different fields, which can realize single and double sides laminating of non-woven fabrics, paper, film, film, dipping cloth, synthetic materials and other materials. And double-layer, three-layer material coating compound. It is widely used in the production of products in the fields of food, packaging, advertising, household goods, nursing, health care, and building materials.

Product production.

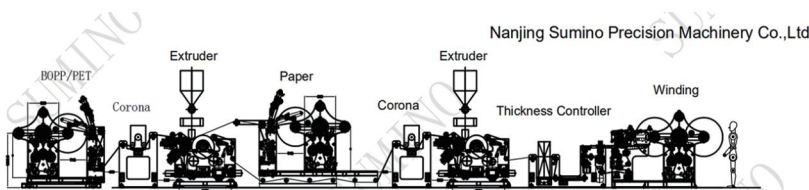
设备型号	Equipment model	1200/1600/2000/2400/3600/4800/5200
制品宽度(mm)	Product width (mm)	1000/1400/1800/2200/3400/4600/5000
制品厚度(mm)	Product thickness (mm)	0.02—0.1mm
最大线速度 m/min	Maximum line speed m/min	60—400m

公司机器案例 Company Case

2600mm PE淋膜衬布2600mm PE coated interlining Machine



设备流程图Flow Chart



SUMINO-Paper Coating machine 05/08/2020
Production Line Size:25000mm*4000mm*4500mm

应用范围Applications



联系我们 Contact Us

地址：江苏省南京市江宁区开拓路11号
电话：025 5183 9686 / 133 9078 0291
邮箱：liliming@susumino.com
网址：www.susumino.com



TPU/TPE/EVA流延膜生产线

TPU/TPE/EVA cast film production line

该设备生产胶膜的幅宽1372毫米-1520毫米，厚度0.02-3.0毫米的，可采用一台或多台单螺杆挤出机共挤，每台挤出机分为8个温控区准确控温。最大产量可达600KG/H，做单层、A/B/A或A/B分配模式。能满足上下两层同时覆离型膜、附布。采用PLC整体控制，只需一人便能轻松操控，关键部件拆卸替换方便，人性化，预留远程操控端口，可全球异地实现同步监控，性价比极高。制品透明度高、晶点少、收卷无气泡。

This equipment produces film with a width of 1200 mm-3600 mm and a thickness of 0.02-3.0 mm. It can be co-extruded by one or more single-screw extruders. The machine is divided into 8 temperature control areas for accurate temperature control. The maximum output can reach 600KG/H, with single layer, A/B/A or A/B distribution mode. It can meet the requirements of covering the upper and lower layers with release film at the same time Attached cloth. It adopts PLC overall control, which can be easily controlled by only one person, and the key components are easy to disassemble and replace, and it is user-friendly. The remote control port is reserved, which can be changed globally. Realize synchronous monitoring with high cost performance. The product has high transparency, few crystal points, and no bubbles when rewinding.

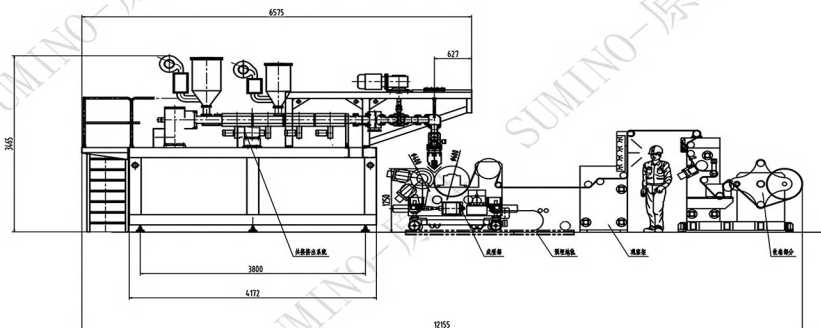
设备型号	Equipment model	1200/2400/3600
制品宽度(mm)	Product width (mm)	1000/2200/3400
制品厚度(mm)	Product thickness (mm)	0.02—3mm
最大线速度 m/min	Maximum line speed m/min	5—30m

公司机器案例Company Case

1200mm TPE流延手套压纹膜生产线 1200mm TPE Casting Embossed Film Line



设备流程图 Flow Chart



应用范围 Applications



联系我们Contact Us

地址：江苏省南京市江宁区开拓路11号
电话：025 5183 9686 / 133 9078 0291
邮箱：liliming@susumino.com
网址：www.susumino.com



单层多层片材机生产线

Multi or Single Layer Sheet Extrusion Line Machine

ABS/PC/PP/PS/PLA/PE Sheet Extrusion Line



使用多台挤出机共挤出技术生产多层共挤出片材，例如ABA, ABCBA, ABCDCBA其他多层结构，广泛用于热成型，印刷，金属包装，电子托盘，植绒，食品，服装，工具，玩具，文具膜，装饰膜。

Using multiple extruders co-extrusion technology to produce multi-layer co-extruded sheet, such as ABA, ABCBA, ABCDCBA other multi-layer structure, widely used in thermoforming, printing, metal packaging, electronic tray, flocking, food, clothing, tools, toys, stationery films, decorative films.

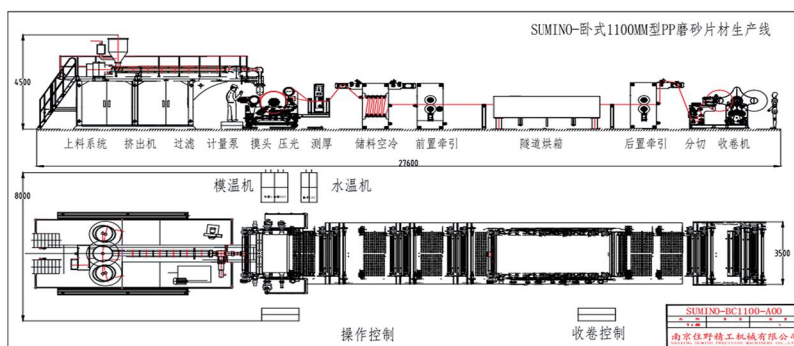
设备型号	Equipment model	600/1200/2100/Custom
制品宽度(mm)	Product width (mm)	500/1100/2000
制品厚度(mm)	Product thickness (mm)	0.1—1.5mm
最大线速度 m/min	Maximum line speed m/min	6—30m

公司机器案例 Comapny Case

1000mm PP PLA片材生产线 1000mm PP PLA Sheet Machine



设备流程图 Flow chart



应用范围 Applications



联系我们 Contact Us

地址：江苏省南京市江宁区开拓路11号
 电话：025 5183 9686 / 133 9078 0291
 邮箱：liliming@susumino.com
 网址：www.susumino.com



BOPP/BOPE/BOPLA/BOPET 双向拉伸薄膜生产线 Biodirectional Stretch Film Production Line

BOPP薄膜强度高、阻气性好、印刷性能和抗撕裂性能好，被广泛应用于食品包装、医用包装、工业包装、烟草包装、电工膜、锂电池隔膜等领域。

BOPP film has high strength, good gas barrier properties, good printing performance and tear resistance. It is widely used in food packaging, medical packaging, industrial packaging, tobacco packaging, electrical film, lithium battery separators and other fields.

设备型号	Equipment model	1200	2400	3600	4800
制品宽度(mm)	Product width (mm)	1000	2200	3400	4600
制品厚度(mm)	Product thickness (mm)	0.1—0.3mm	0.1—0.3mm	0.1—0.3mm	0.1—0.3mm
最大线速度 m/min	Maximum line speed m/min	40—150m	60—180	80—250	100—300
进膜宽度范围 mm	Film width	200~400mm	400—600	600—1000	800—1200
最大拉伸宽度 mm	Maximum stretch width	1200mm	2400mm	3600mm	4800mm
出膜宽度范围 mm	Film width range	8000~12000mm	2000—2400	3200—3600	4200—4800
最大拉伸倍数	Maximum stretch ratio	1:5	1: 6	1: 7	1: 8

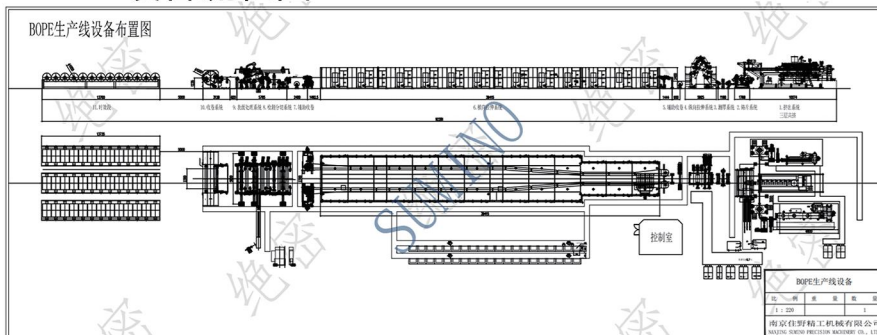
公司机器案例 Company Case

工艺流程：挤出机—精密过滤室—熔体泵—衣架式模具—流延成型—NDC测厚仪—MDO纵向拉伸机—厚度计—横向横拉机—厚度计—牵引机—收卷机—分切机薄膜尺寸

Process flow: extruder--precision filter chamber--melt pump--hanger-type mold--casting molding--NDC thickness gauge--MDO longitudinal stretching machine--thickness gauge--transverse horizontal stretching machine--Thickness gauge--Hauling machine--Winding machine--Slitting machine film size



设备流程图 Flow Chart



应用范围 Application



联系我们 Contact Us

地址：江苏省南京市江宁区开拓路11号
电话：025 5183 9686 / 133 9078 0291
邮箱：liliming@susumino.com
网址：www.susumino.com



PE透气膜生产线

PE breathable film production line

卫生透气膜生产效率极高。卫生底片薄膜可用于生产婴儿尿布，卫生巾，失禁垫，尿垫和防护服。在用于卫生应用流延膜生产线方面，一条产线可实现三种不同类型产品。无论是透气膜，压花膜还是类似布的层压膜，只需一条流延膜生产线即可生产所有三种类型的卫生膜。

The production efficiency of hygienic breathable membrane is extremely high. The sanitary backsheet film can be used to produce baby diapers, sanitary napkins, incontinence pads, changing pads and protective clothing. Used in terms of cast film production lines for sanitary applications, one production line can realize three different types of products. Whether it is breathable film, embossed film or cloth-like layer for laminating, only one cast film production line can produce all three types of sanitary films.

设备型号	Equipment model	1600/2000/2600/3400
制品宽度(mm)	Product width (mm)	1100/1500/2100/2800
制品厚度(mm)	Product thickness (mm)	0.02—0.1mm
最大线速度 m/min	Maximum line speed m/min	60—200m

公司机器案例 Comapny Case

1800mm PE透气膜生产线 1800mm PE Breathable Film Line



设备流程图 Flow chart



应用范围 Applications



联系我们 Contact Us

地址：江苏省南京市江宁区开拓路11号
电话：025 5183 9686 / 133 9078 0291
邮箱：liliming@susumino.com
网址：www.susumino.com



PC/PP中空格子板生产线

PC/PP Hollow Grid Sheet Extrusion Line

PP中空格子板设备具备实现高产能的特质：材料耐磨，寿命长，易维护，根据产能和生产速度优化工艺。PP中空格子板设备生产的中空板应用：办公楼、大厅、商场、体育场馆、公用设施的采光顶车站、停车场、凉亭、休息厅走廊的雨棚高速公路及城市高架路隔音屏障办公室与私宅的室内隔断、家庭卫生间淋浴房的隔断。

The PP hollow grid board equipment has the characteristics of realizing high production capacity: the material is wear-resistant, long life, easy to maintain, and the process is optimized according to the production capacity and production speed. Application : office buildings, halls, shopping malls, stadiums, public facilities, lighting roofs, stations, parking lots, pavilions, lounge corridor and so on.

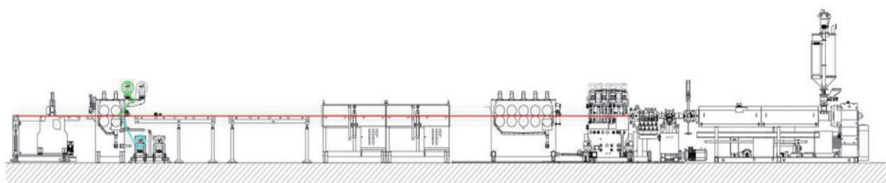
设备型号	Equipment model	1300/2100/Custom
制品宽度(mm)	Product width (mm)	1300/2100//Custom
制品厚度(mm)	Product thickness (mm)	2—10mm
产能 kg/h	Output kg/h	200-600kg/h

公司机器案例 Comapny Case

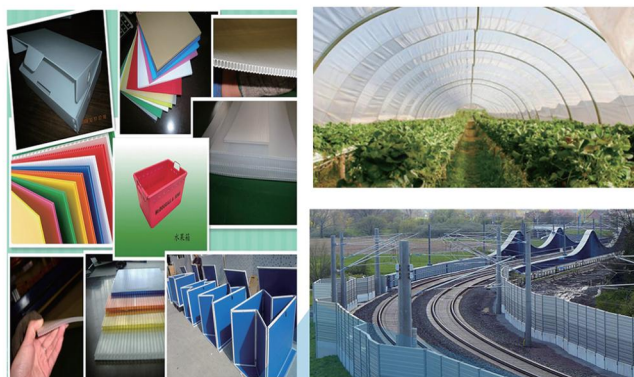
1800mm中空格子板生产线 PP Hollow Sheet Machine



设备流程图 Flow chart



应用范围 Applications



联系我们 Contact Us

地址：江苏省南京市江宁区开拓路11号
 电话：025 5183 9686 / 133 9078 0291
 邮箱：liliming@susumino.com
 网址：www.susumino.com

